

Custom Designed and Built For Your Process:

PRM control panels can be built using either relay-based logic or PLC-based logic. PLC-based logic has many benefits including the simplicity of making control changes on the fly to accommodate process modifications. In addition, PLC-based control systems provide flexibility for expansion, are extremely reliable, require less space for hardware, and make troubleshooting easier when operational issues arise. Each control system is custom designed for your application and comes complete with a full set of installation and wiring diagrams.

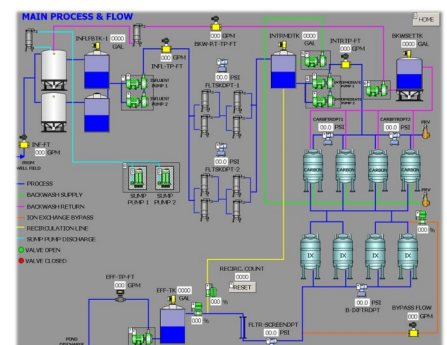
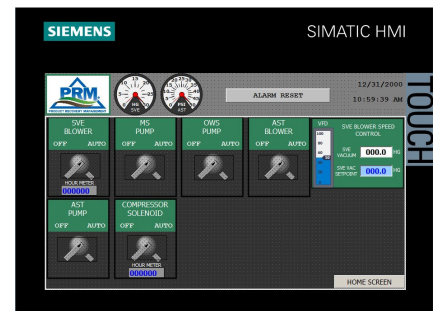
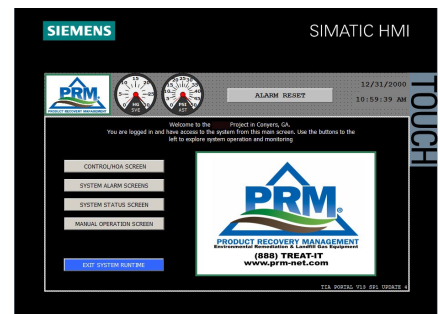
Quality Under Control:

PRM is one of the nation's only remediation system integrators who is Third Party Certified to manufacture control panels and systems to UL 508A and UL 698A standards. All of PRM's certified control panels are built in-house and undergo rigorous testing to ensure safety and integrity—which is paramount in today's climate to reduce risk. PRM systems go through stringent procedures which exceed Nationally Recognized Training Laboratory (NRTL) specifications and standards. Simply put: PRM systems are safer to operate and maintain.

SCADA—Your Window to Operations:

Supervisory Control and Data Acquisition (SCADA) allows you to control your system from a single touch screen mounted on the control panel – or from a remote location via PC or handheld device if properly configured with one of our wireless telemetry packages. SCADA systems seamlessly integrates your system's controls and operational data in one place making it easier to operate and maintain. SCADA systems are typically integrated in every system we build – or it can easily be integrated into your existing system as an upgrade.

- Third Party Certified UL 508A and UL 698A Control Panels
- Full SCADA Packages
- Telemetry Packages – Wired and Wireless
- PRM High Speed Wireless Service for Connectivity (no contract required)
- Control Design and Full CAD Capabilities
- Field Diagnosis
- Retrofitting and Upgrades
- Code Compliance Audits



SIEMENS

SIMATIC HMI



ALARM RESET

12/31/2000

10:59:39 AM

Welcome to the Project in Conyers, GA.
You are logged in and have access to the system from this main screen. Use the buttons to the left to explore system operation and monitoring

CONTROL/HOA SCREEN

SYSTEM ALARM SCREENS

SYSTEM STATUS SCREEN

MANUAL OPERATION SCREEN

EXIT SYSTEM RUNTIME



TIA PORTAL V13 SP1 UPDATE 4

TOUCH

Home Screen

SIEMENS

SIMATIC HMI



ALARM RESET

12/31/2000

10:59:39 AM

MANUAL MOTOR OPERATION SCREEN
NOTE: HOLDING SWITCHES IN HAND MAY CAUSE DAMAGE TO PUMPS OR MOTORS.
ALL SWITCHES WILL LATCH ON BYPASSING SYSTEM ALARMS.

SVE BLOWER HAND	MS PUMP HAND	OWS PUMP HAND	AST BLOWER HAND
AST PUMP HAND	COMPRESSOR SOL. HAND		

XP ROOM TEMP FAN SETPOINT XP ROOM TEMP 000.0 °F TEMP SETPOINT 000.0 °F TEMP DIFFERENTIAL 00 °F	CONTROL ROOM TEMP FAN SETPOINT CONTROL ROOM TEMP 000.0 °F TEMP SETPOINT 000.0 °F TEMP DIFFERENTIAL 00 °F
---	---

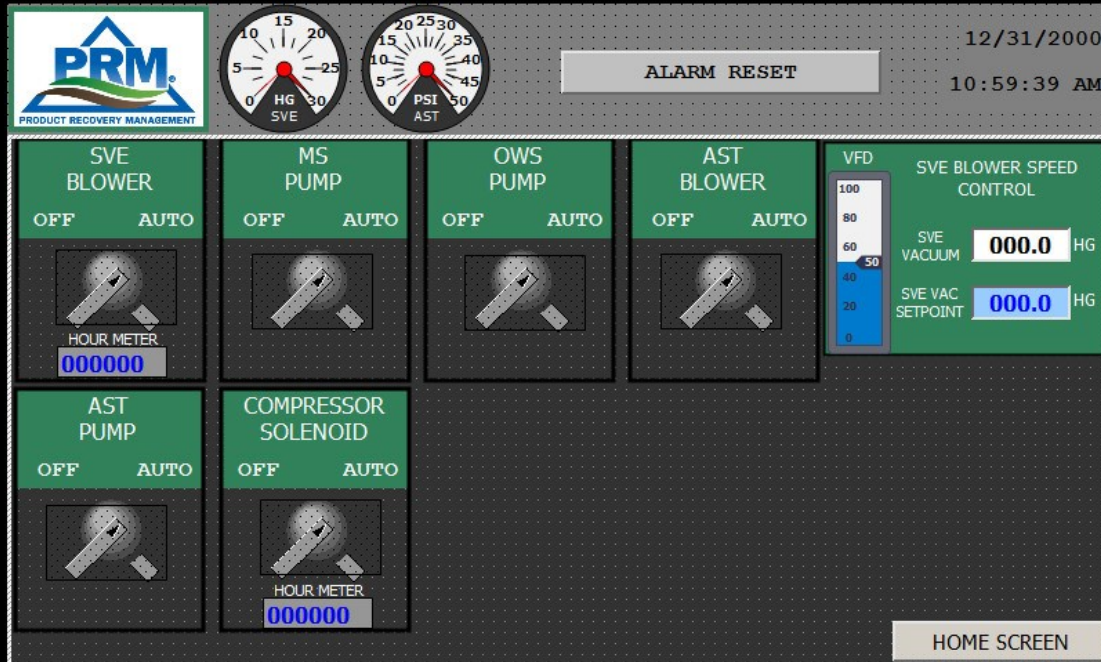
HOME SCREEN

TOUCH

Hand Screen

SIEMENS

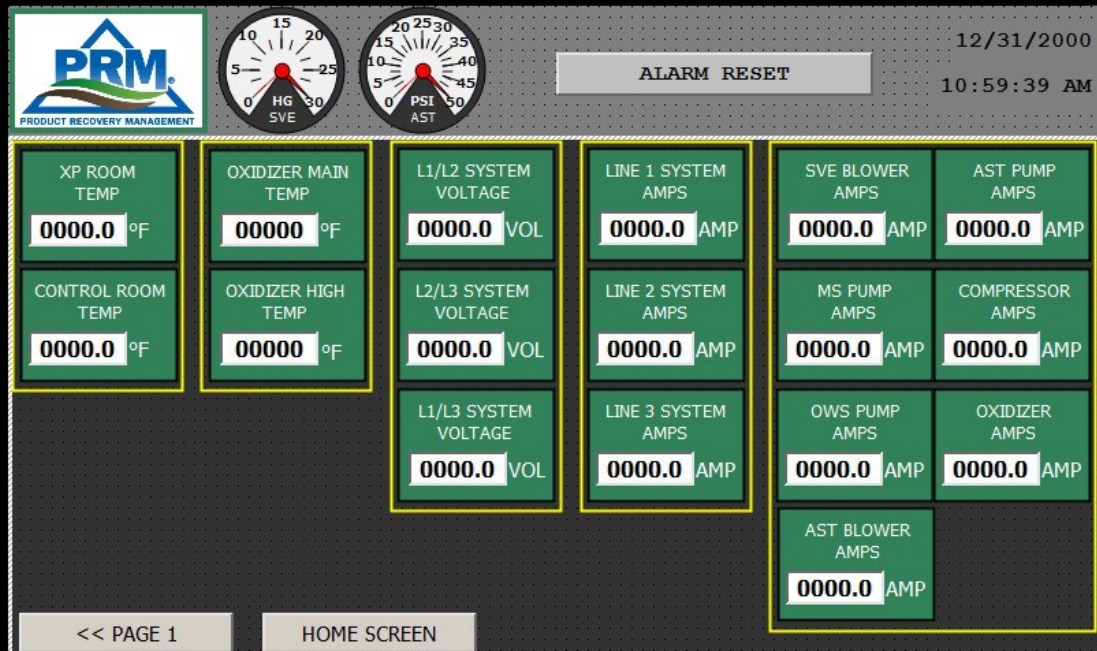
SIMATIC HMI



HOA
Screen

SIEMENS

SIMATIC HMI



Status
Screen